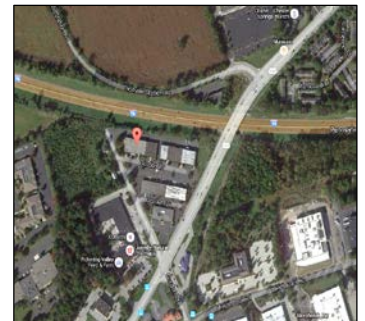
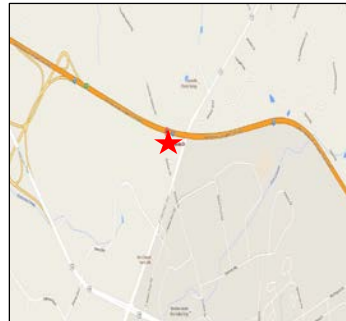


**FOR LEASE: 402 Gordon Drive
Exton, Uwchlan Township, Chester County, PA 19341**



| | |
|------------------|-------------------------------|
| Township: | Uwchlan Township |
| Zoning: | Planned Industrial-Commercial |
| Water/Sewer/Gas: | Public |
| Year Built: | 1984 |
| Total Space: | 1,325 SF |
| Acreage: | .1 Acres |
| Features: | Renovated Roof (5/15) |
| Traffic Count: | 22,000 VPD |
| Rental Rate: | \$2,475/Month Gross |

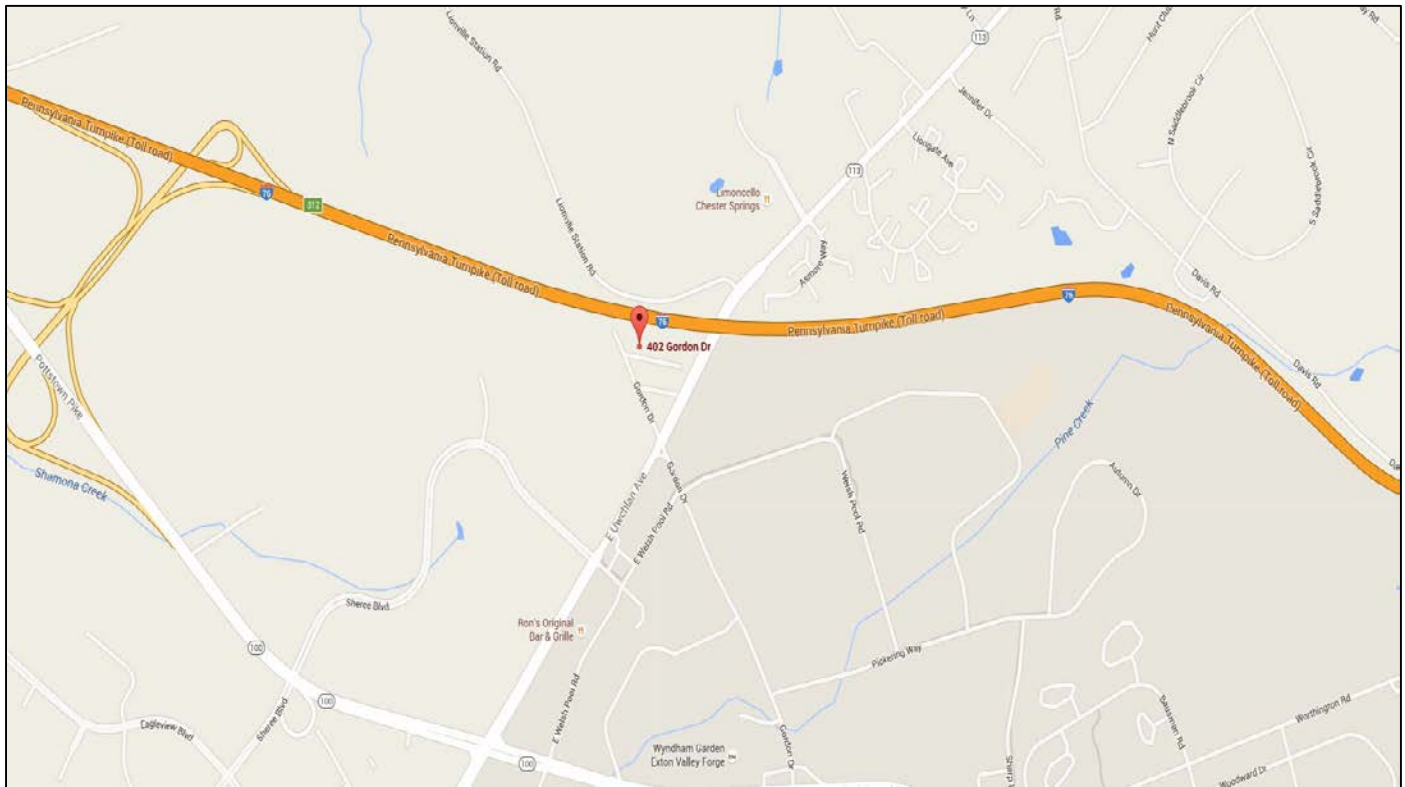


For more information, please contact:

Robert Eshelman: Ph: (610) 225-0905 or Cell: (904) 631-5634
Email: Reshelman@liebermanearley.com

Phil Earley: Ph: (610) 225-0900 or Cell: (610) 348-3343
Email: Philearley@liebermanearley.com

Lieberman Earley & Co, Inc.
485 Devon Park Drive, Suite 110
Wayne, PA 19087
Ph: (610) 688-4300
Fax: (610) 688-4544
www.liebermanearley.com



Building Summary
1500 E Lancaster Avenue, Paoli, PA
Available SOON

- Lieberman Earley & Co. is pleased to present an outstanding opportunity to lease a one story, Class B office space in a remarkable, brick and masonry building in a well-maintained office/flex condominium park.
- 402 Gordon Drive is centrally located just minutes from the Lionville Shopping Center, the PA Turnpike, Route 100, Route 113, and the Route 30 Bypass.
- This location conveys a solid, successful image at a remarkably reasonable price allowing entrepreneurial businesses to thrive.
- Property offers ample and well-lit parking, helping to maintain the safe and professionally-managed atmosphere of the Condominium Park.
- Building features a recently renovated roof as of May, 2015 in addition to a new self-storage complex under construction next door.
- Multiple units available ranging from 555 to 1,880 SF

Information contained herein has been obtained from the owner of the property or from sources deemed reliable. We have no reason to doubt its accuracy but make no warranty or representation. All information is submitted subject to errors, omissions, change, withdrawal without notice and any special listing conditions of the owner.

LIEBERMAN EARLEY & COMPANY



Main Entry



Reception



Private Powder Room Entry



Middle Office Area

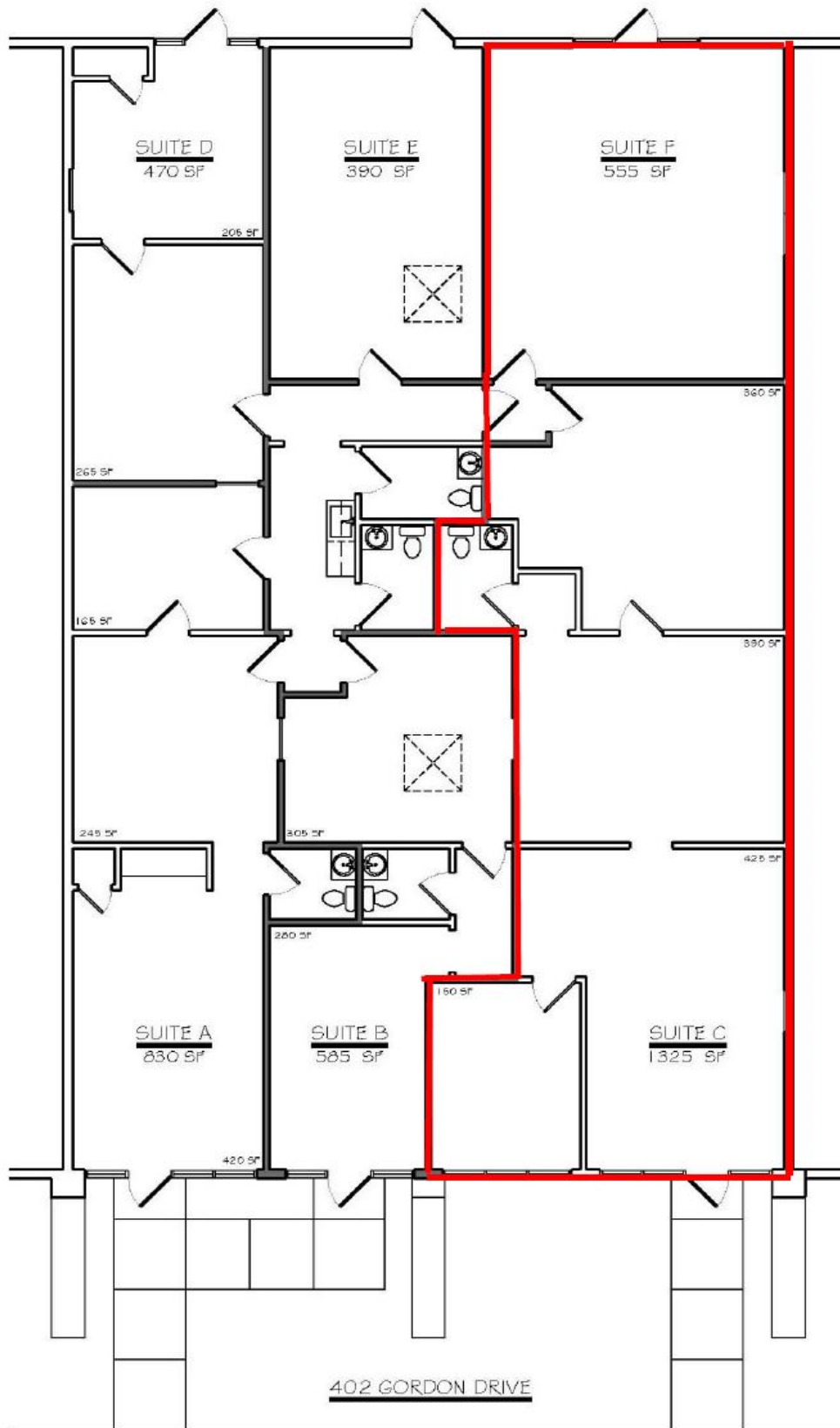


Rear Office Area



Rear Office Entrance

Information contained herein has been obtained from the owner of the property or from sources deemed reliable. We have no reason to doubt its accuracy but make no warranty or representation. All information is submitted subject to errors, omissions, change, withdrawal without notice and any special listing conditions of the owner.



Information contained herein has been obtained from the owner of the property or from sources deemed reliable. We have no reason to doubt its accuracy but make no warranty or representation. All information is submitted subject to errors, omissions, change, withdrawal without notice and any special listing conditions of the owner.