

999 West Chester Pike
West Chester, PA

FOR LEASE
OFFICE / MEDICAL



Jessi Ayoub

484-459-0557

jayoub@liebermanearley.com

www.liebermanearley.com | 610-688-4300

LIEBERMAN EARLEY & COMPANY

The Meadows - 485 Devon Park Drive, Suite 110, Wayne, PA 19087

EXECUTIVE SUMMARY

Total Available:	5,490 RSF Suite 100: 3,660 RSF <i>(Divisible to 1,830 RSF)</i> Suite 201: 1,830 RSF
-------------------------	--

PROPERTY DESCRIPTION:

- Abundant parking: 3/1000
- Generous window line
- Monument signage is available along West Chester Pike



SUITE DESCRIPTIONS:

100 –5 conference rooms, 8 private offices, bull pen space, reception area, kitchenette & IT closet


201—2nd-floor space includes 7 private offices and 1 conference room.

999 West Chester Pike
West Chester, PA

Key Facts:

115,545 Population:  43,266 Households:	38.8 Median Age:  \$81,659 Median Disposable Income:
--	--

Education:

 87% High School Graduates:	 Some College 81% or Bachelors:
--	--



Lease Rate: Suite 100
\$20.50/RSF + Elec

Lease Rate: Suite 201
\$19.50/RSF + Elec

Disclaimer

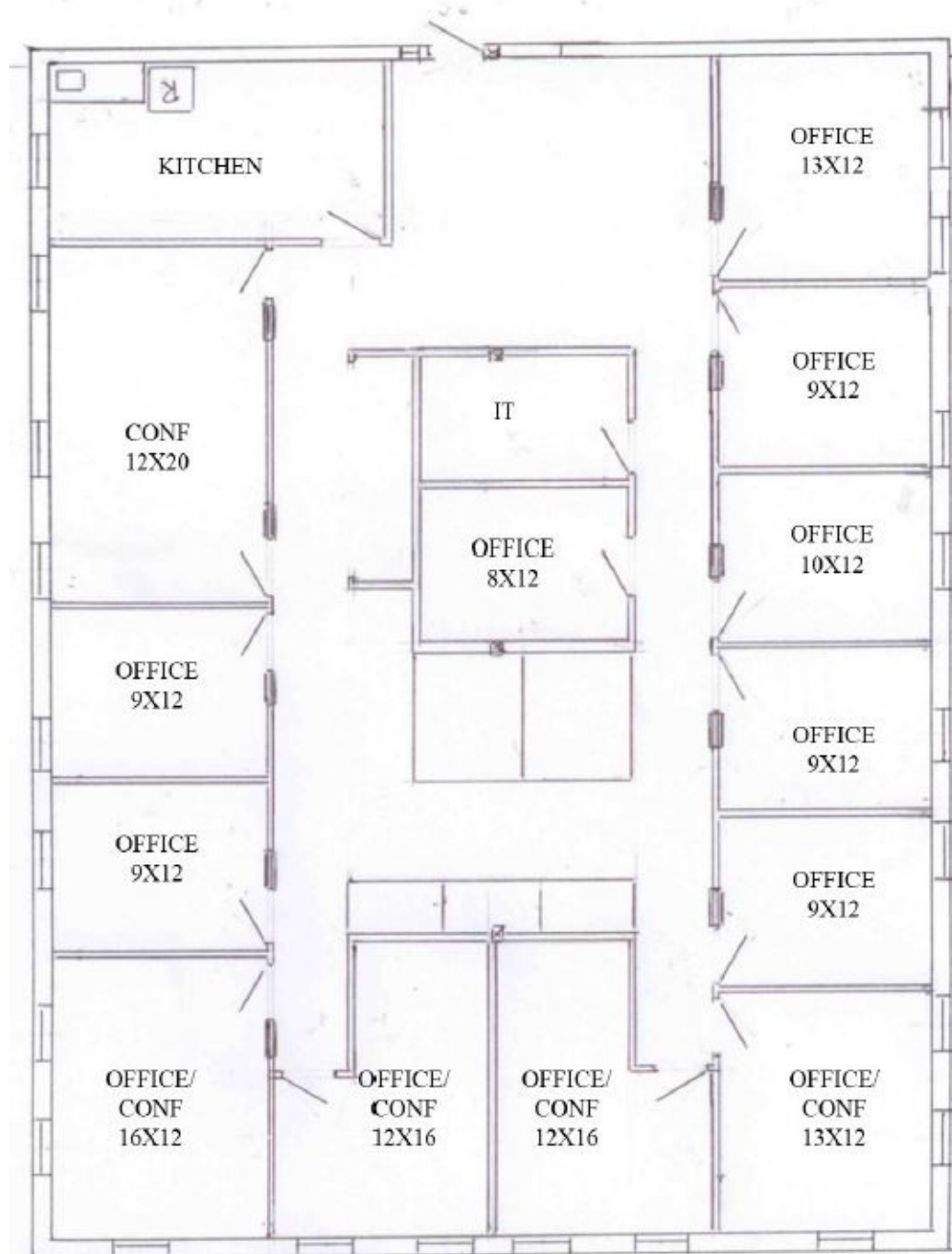
Information contained herein has been obtained from the owner of the property or from sources deemed reliable. We have no reason to doubt its accuracy but make no warranty or representation. All information is submitted subject to errors, omissions, change, withdrawal without notice and any special listing conditions of the owner.

LOCATION HIGHLIGHTS / SITE MAP



- Located at the intersection of the West Chester Pike and Rt. 202 and 322 Bypass
- Short driving distance to amenities such as shops, and restaurants like Dunkin Donuts, Smoothie King, and Wawa, WSFS Bank
- Less than a minute from West Chester Borough

SITE PLAN Suite 100



SITE PLAN Suite 201

