

Office Space Located in the West Valley Business Center is Available For Lease



900 W. Valley Road | Suite 600, Wayne, PA

FEATURES:

- (can be divided) 3,220 ± SF Space layout which includes: reception area, 10 private offices, conference room, storage closet, large bathrooms, and full size modern kitchen
- minimum space available – 1000 SF
- Private entrance includes signage
- Operable windows throughout
- Excellent on-site parking
- Handicap accessible
- Routine system maintenance provided - on site park maintenance
- Landscaping, snow removal and lawn maintenance

Contact

JoAnn West | 610.225.0913
Jwest@liebermanearley.com

BUILDING: Office with a total of 5,200 SF in a modern first floor brick building. Owner occupies 1,800 SF.



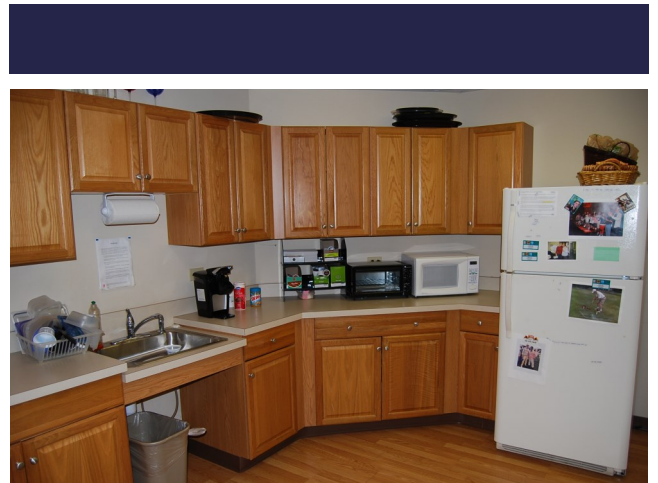
LOCATION: Well –located on West Valley Road with quick access to Routes 202, I-76, 422, and Pa Turnpike. Adjacent to Regional Post Office. Nearby Amenities include Gateway Shopping Center and the recently opened King of Prussia Town Center.

LIEBERMAN EARLEY & COMPANY

The Meadows 485 Devon Park Drive Suite 110 Wayne, PA 610.688.4300

Information contained herein has been obtained from the owner of the property or from sources deemed reliable. We have no reason to doubt its accuracy but make no warranty or representation. All information is submitted subject to errors, omissions, change, withdrawal without notice and any special listing conditions of the owner.

900 W. Valley Road | Interior Suite 600

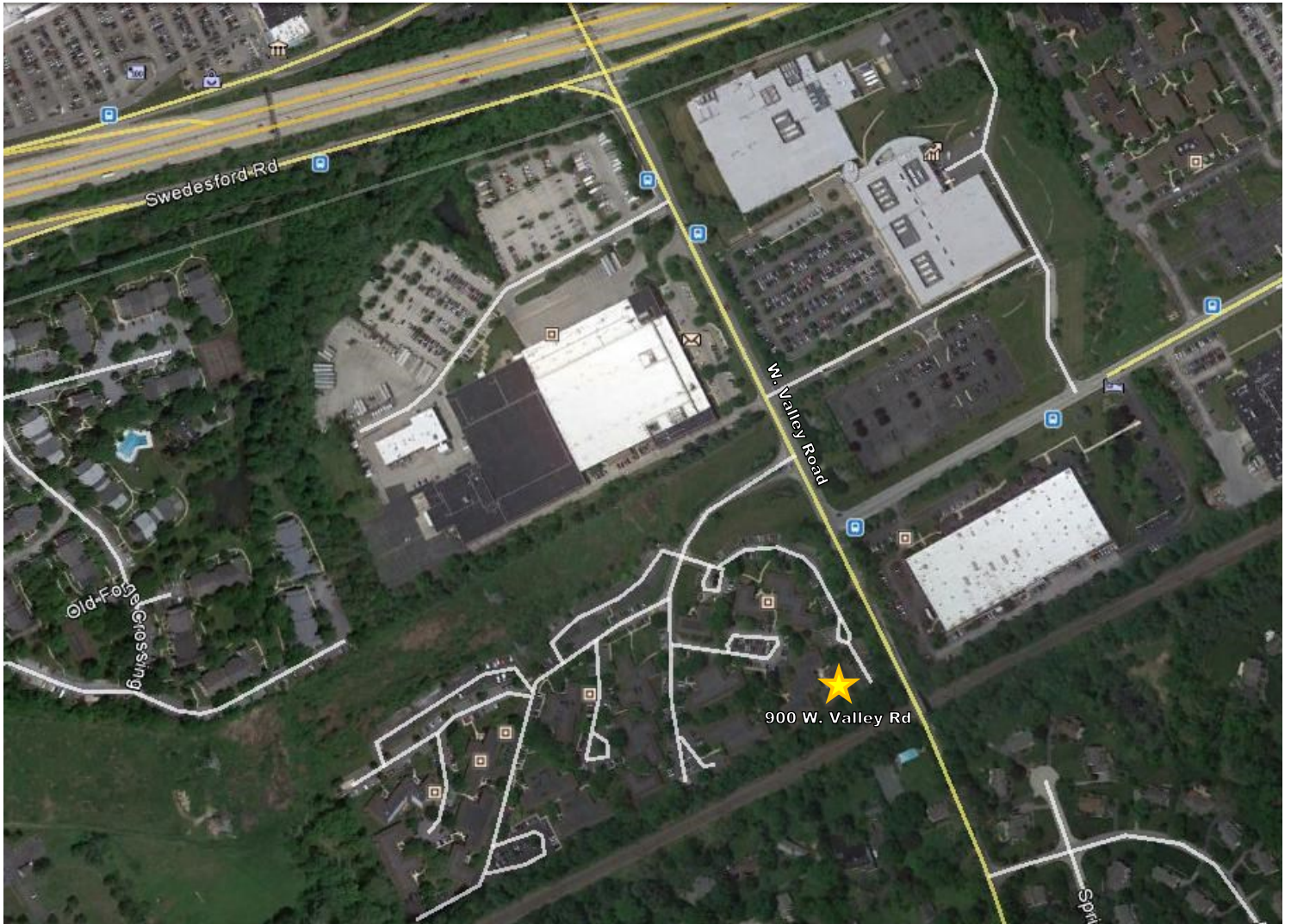


LIEBERMAN EARLEY & COMPANY

The Meadows 485 Devon Park Drive Suite 110 Wayne, PA 610.688.4300

Information contained herein has been obtained from the owner of the property or from sources deemed reliable. We have no reason to doubt its accuracy but make no warranty or representation. All information is submitted subject to errors, omissions, change, withdrawal without notice and any special listing conditions of the owner.

900 W. Valley Rd, Suite 600, Wayne, PA

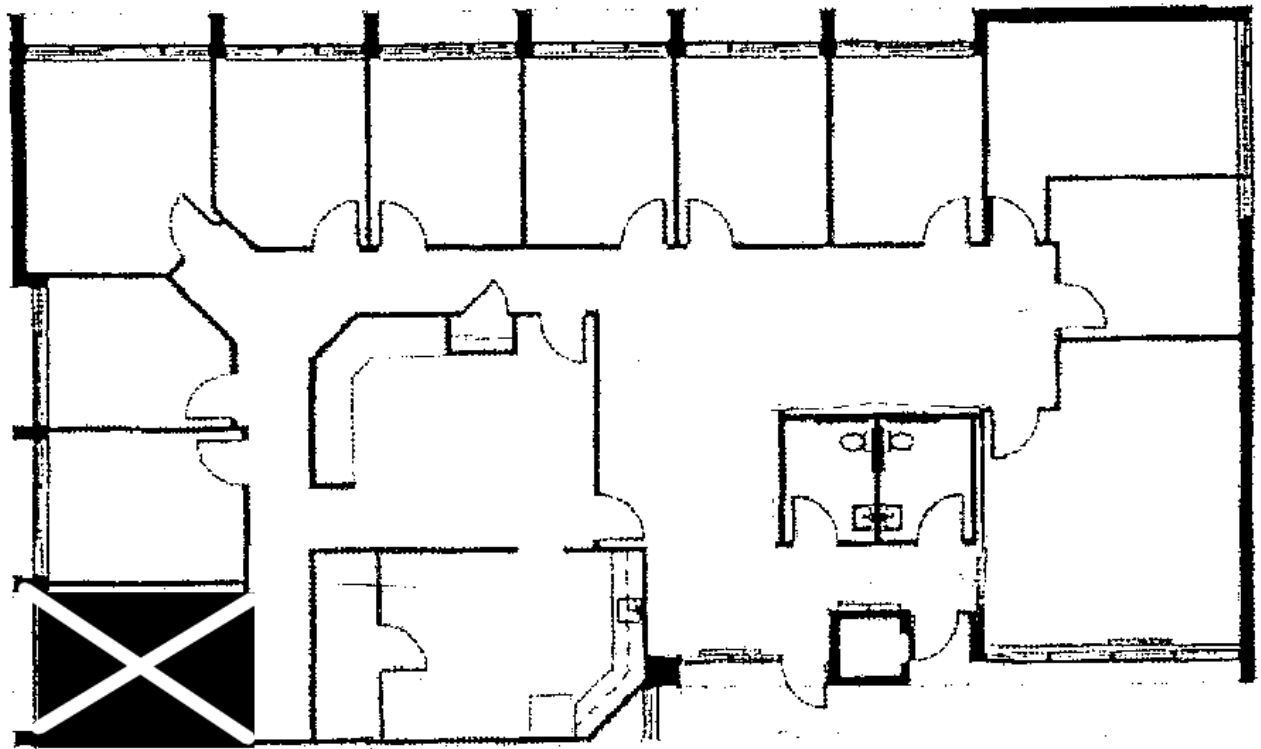


LIEBERMAN EARLEY & COMPANY

The Meadows 485 Devon Park Drive Suite 110 Wayne, PA 610.688.4300

Information contained herein has been obtained from the owner of the property or from sources deemed reliable. We have no reason to doubt its accuracy but make no warranty or representation. All information is submitted subject to errors, omissions, change, withdrawal without notice and any special listing conditions of the owner.

900 W. Valley Rd, Suite 600, Wayne, PA



ARCHITECTURAL FLOOR PLAN
900 W. VALLEY RD., SUITE 600

SCALE 0 10 20 FT.

LIEBERMAN EARLEY & COMPANY

The Meadows 485 Devon Park Drive Suite 110 Wayne, PA 610.688.4300

Information contained herein has been obtained from the owner of the property or from sources deemed reliable. We have no reason to doubt its accuracy but make no warranty or representation. All information is submitted subject to errors, omissions, change, withdrawal without notice and any special listing conditions of the owner.