

780 West Lincoln Highway
Exton, PA

Medical Office Condominium
For Sale



JoAnn West

610.225.0913

jwest@liebermanearley.com

Phil Earley, CCIM

610.225.0900

philearley@liebermanearley.com

LIEBERMAN EARLEY & COMPANY

www.liebermanearley.com | 610-688-4300

The Meadows - 485 Devon Park Drive, Suite 110, Wayne, PA 19087

780 West Lincoln Highway
The Commons at Oaklands
Exton, PA

TABLE OF CONTENTS:

Key Features	3
Why This Property	4
Location Site Map	5
Site Plan	6
Interior Photos	7-8



Disclaimer

Information contained herein has been obtained from the owner of the property or from sources deemed reliable. We have no reason to doubt its accuracy but make no warranty or representation. All information is submitted subject to errors, omissions, change, withdrawal without notice and any special listing conditions of the owner.

LIEBERMAN EARLEY & COMPANY

The Meadows - 485 Devon Park Drive, Suite 110, Wayne, PA 19087

KEY FEATURES

SIZE:	5,400 SF in 2-2,700 SF Units
LOCATION:	Located in the heart of Chester County, these medical condominiums are located in on the edge of Exton and Downtown
IDEAL FOR:	Medical office users and healthcare providers
EXTERIOR ENTRANCES:	2 exterior entrances per unit.
WINDOWS:	Each condominium includes operable windows



Sale Price:

\$295/SF or \$1,593,000 for Both Units

JoAnn West

610.225.0913

jwest@liebermanearley.com

Phil Earley, CCIM

610.225.0900

philearley@liebermanearley.com

LIEBERMAN EARLEY & COMPANY

Why This Property

SOUGHT AFTER LOCATION:	Chester County's most sought-after condominium property, this location is perfectly nestled on the edges of Exton and Downingtown.
PROFESSIONAL MANAGEMENT:	The condominiums are managed by a Professional Managed Association
BUSINESS US 30 ACCESS:	With a signalized intersection at the entrance of the park, there's easy access in and out of the condominiums.
ORIGINAL OWNERSHIP:	Built in 2007, the property is currently owned by its original owner
OPTION FOR PURCHASE:	The condominiums can be bought individually or as a pair.



JoAnn West

610.225.0913

jwest@liebermanearley.com

Phil Earley, CCIM

610.225.0900

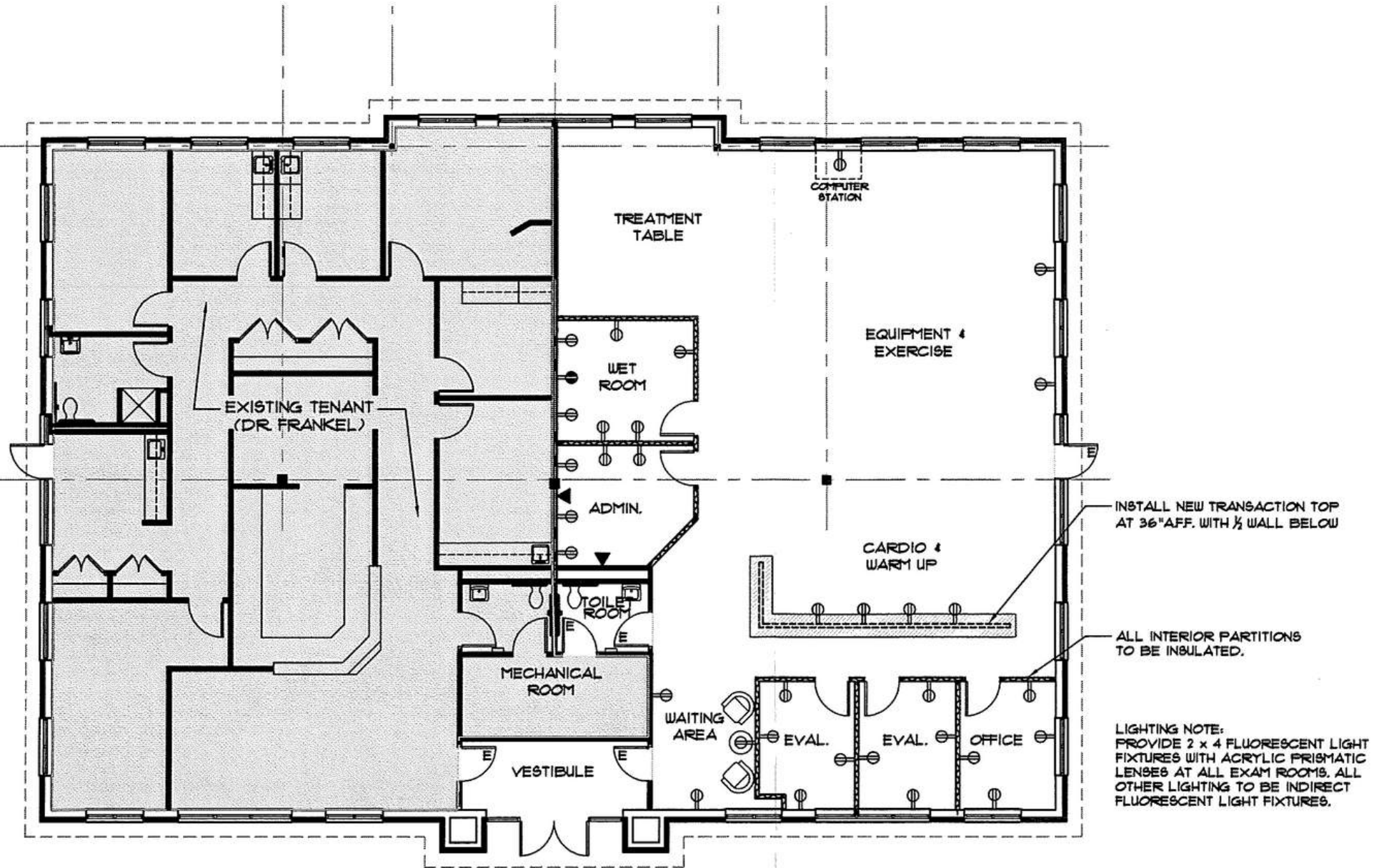
philearley@liebermanearley.com

LIEBERMAN EARLEY & COMPANY

LOCATION SITE MAP



SPACE PLAN



1 PROPOSED FLOOR PLAN
SK-1 SCALE: 1/8" = 1'-0"

INTERIOR PHOTOS



INTERIOR PHOTOS

