

780 W Lancaster Ave.
Bryn Mawr, PA

For Lease



Phil Earley, CCIM

610.225.0900

philearley@liebermanearley.com

www.liebermanearley.com | 610-688-4300

LIEBERMAN EARLEY & COMPANY

The Meadows - 485 Devon Park Drive, Suite 110, Wayne, PA 19087

780 W Lancaster Ave.
Bryn Mawr, PA



Disclaimer

Information contained herein has been obtained from the owner of the property or from sources deemed reliable. We have no reason to doubt its accuracy but make no warranty or representation. All information is submitted subject to errors, omissions, change, withdrawal without notice and any special listing conditions of the owner.

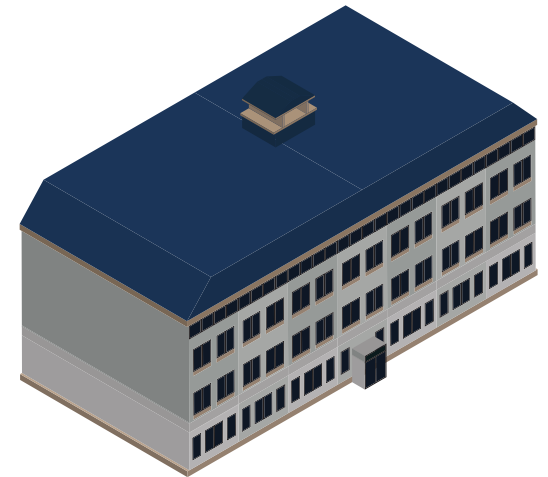
LIEBERMAN EARLEY & COMPANY

The Meadows - 485 Devon Park Drive, Suite 110, Wayne, PA 19087

780 W Lancaster Ave.
Bryn Mawr, PA

EXECUTIVE SUMMARY

Total Building: Suites Available:	25,361 SF Suite 201-3,792 SF
Parking:	Visitor parking 39 spaces Garage parking 53 spaces
Upgrades:	Lobbies and corridors
Floor factor:	13.68%

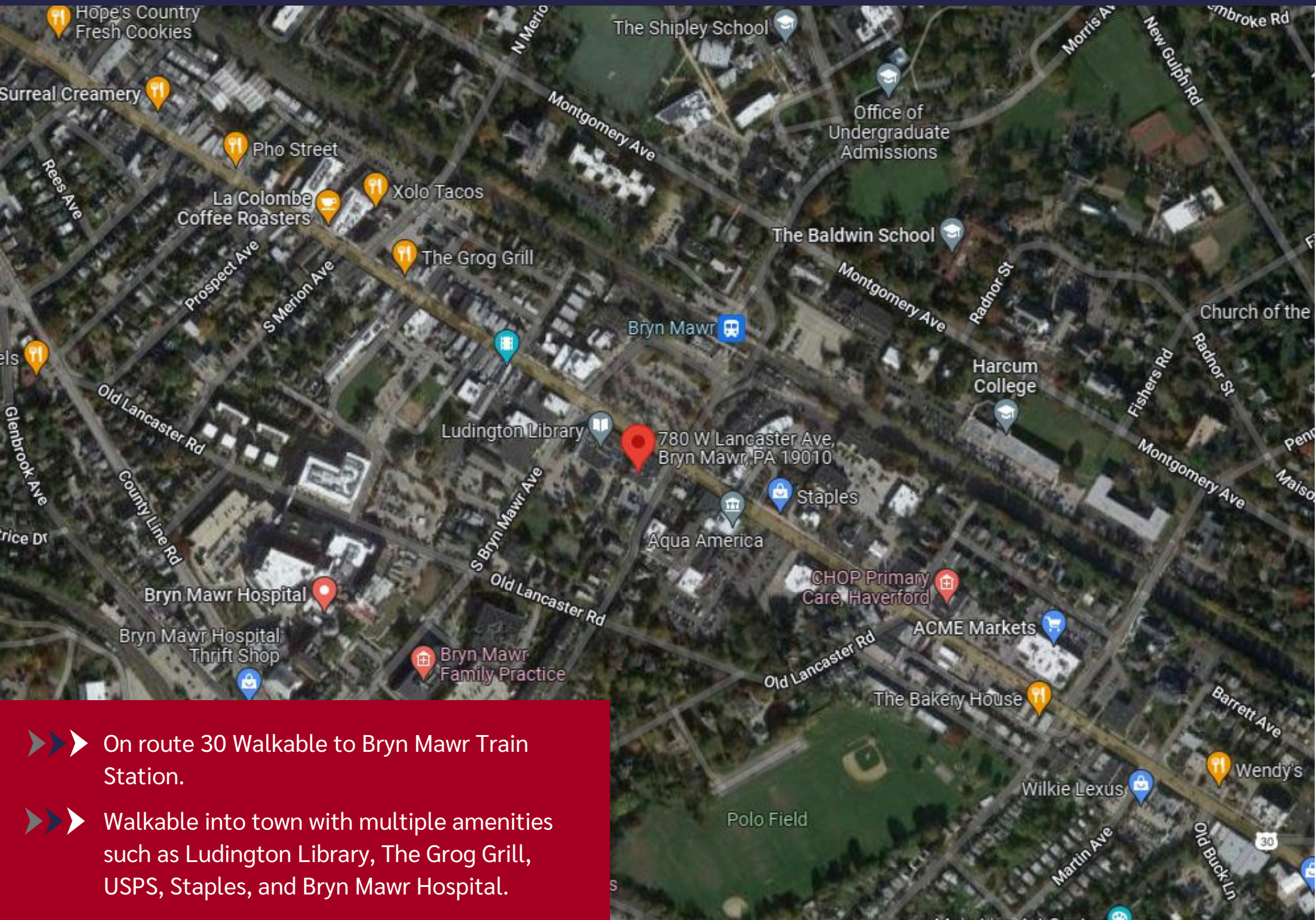


Elevator services all floors of the building including the parking garage, lobby, 1st and 2nd floor.



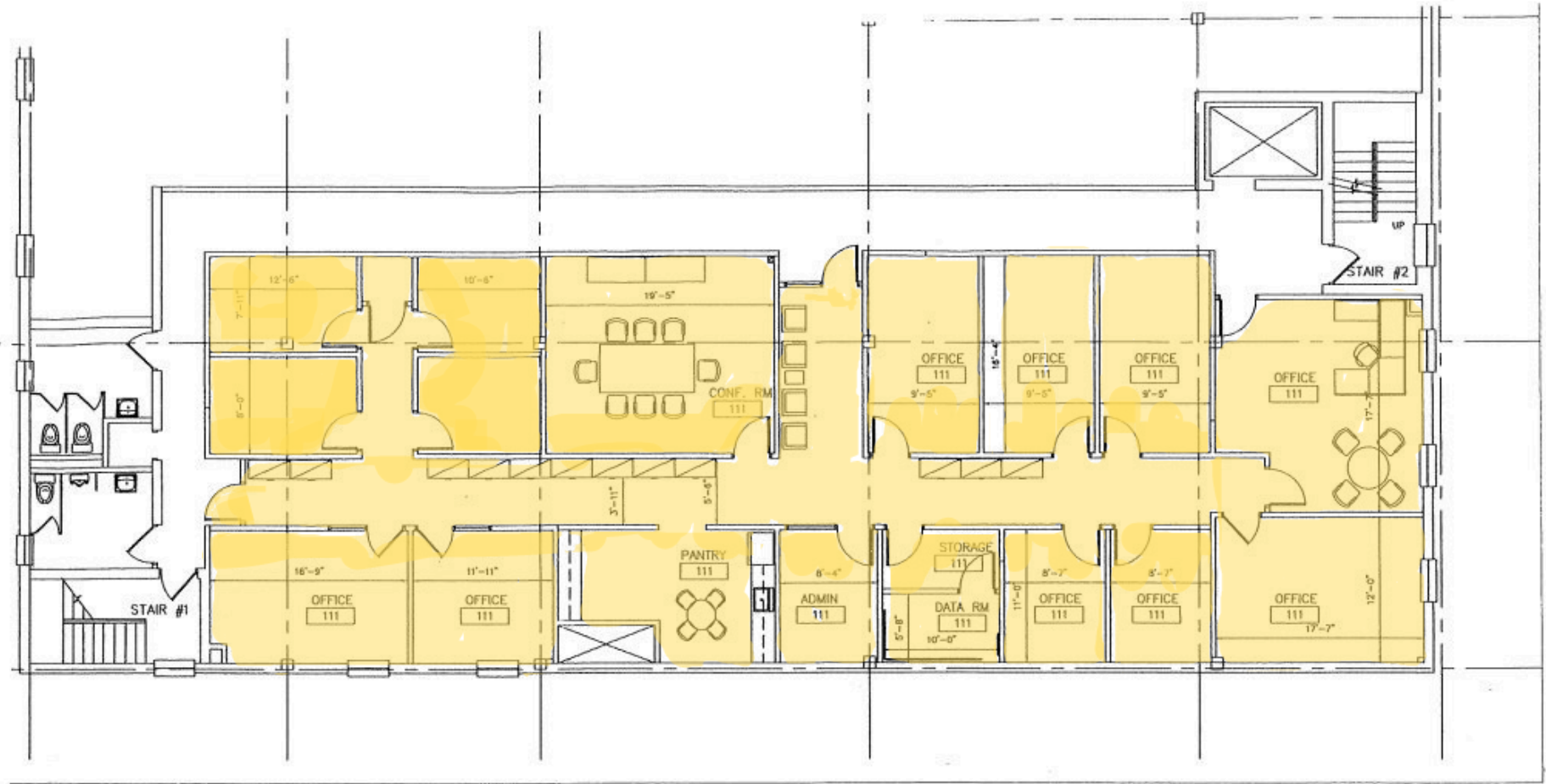
Lease Rate:
\$32.00 SF + Utilities

LOCATION HIGHLIGHTS / SITE MAP



- On route 30 Walkable to Bryn Mawr Train Station.
- Walkable into town with multiple amenities such as Ludington Library, The Grog Grill, USPS, Staples, and Bryn Mawr Hospital.

SUITE 201- 3,792 SF



Will consider splitting the unit into two suites.

780 W Lancaster Ave. Bryn Mawr, PA 19010



780 W Lancaster Ave. Bryn Mawr, PA 19010



780 W Lancaster Ave. Bryn Mawr, PA 19010

