

# Office Space Available for Lease



## 736 Springdale Drive, Exton

### FEATURES:

Available: 1st Floor 1A - 1,742 RSF

Lower Level - 1,892 RSF

Flexible Terms:

Total Building Size: 10,180 SF

Township: West Whiteland Township

Zoning: OR

**LOCATION:** 736 Springdale Drive is in Whiteland Business Park off of Route 30. It is near the Exton Mall, Main Street at Exton, many restaurants, and the Chester Valley Trail. It is also within minutes of Routes 100, 202, and 30 Bypass. 324 residential units planned across from Whiteland Business Park including a Super Wawa.



### Contact:

JoAnn West | 610.225.0913  
jwest@liebermanearley.com

Phil Earley, CCIM | 610.225.0900  
Philearley@liebermanearley.com

**LIEBERMAN EARLEY & COMPANY**

The Meadows 485 Devon Park Drive Suite 110 Wayne, PA 610.688.4300

Information contained herein has been obtained from the owner of the property or from sources deemed reliable. We have no reason to doubt its accuracy but make no warranty or representation. All information is submitted subject to errors, omissions, change, withdrawal without notice and any special listing conditions of the owner.

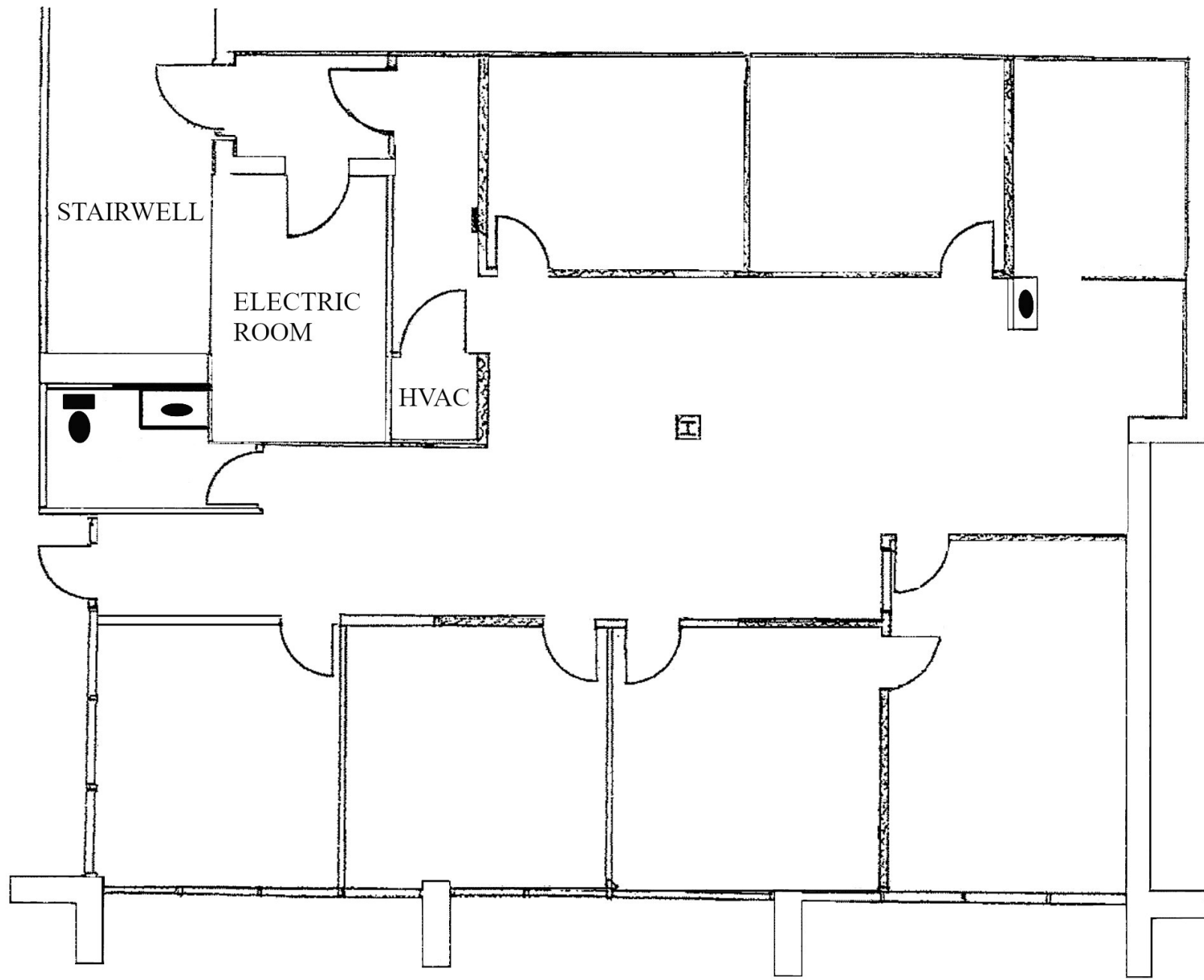
# 736 Springdale Drive, Exton



**LIEBERMAN EARLEY & COMPANY**

The Meadows 485 Devon Park Drive Suite 110 Wayne, PA 610.688.4300

Information contained herein has been obtained from the owner of the property or from sources deemed reliable. We have no reason to doubt its accuracy but make no warranty or representation. All information is submitted subject to errors, omissions, change, withdrawal without notice and any special listing conditions of the owner.



1892 RSF  
Ground Level



# 736 Springdale Drive, Exton



**LIEBERMAN EARLEY & COMPANY**

The Meadows 485 Devon Park Drive Suite 110 Wayne, PA 610.688.4300

Information contained herein has been obtained from the owner of the property or from sources deemed reliable. We have no reason to doubt its accuracy but make no warranty or representation. All information is submitted subject to errors, omissions, change, withdrawal without notice and any special listing conditions of the owner.