

2901 St. Lawrence Ave.
Reading, PA

For Lease



Jessi Ayoub

484.459.0557

jayoub@liebermanearley.com

www.liebermanearley.com | 610-688-4300

LIEBERMAN EARLEY & COMPANY

The Meadows - 485 Devon Park Drive, Suite 110, Wayne, PA 19087

2901 St. Lawrence Ave.
Reading, PA



Disclaimer

Information contained herein has been obtained from the owner of the property or from sources deemed reliable. We have no reason to doubt its accuracy but make no warranty or representation. All information is submitted subject to errors, omissions, change, withdrawal without notice and any special listing conditions of the owner.

LIEBERMAN EARLEY & COMPANY

The Meadows - 485 Devon Park Drive, Suite 110, Wayne, PA 19087

EXECUTIVE SUMMARY

Total Available: 3,020 SF

2901 St. Lawrence Ave.
Reading, PA

Property Features:

- 16,252 SF two story class B office building
- At grade access to both levels
- Strong professional tenant mix
- Shell condition or custom fit-out available
- Well maintained and managed
- Large surface parking field
- Easy access to Rte. 422 & Rte. 222
- Close shopping and restaurants

Suite Features:

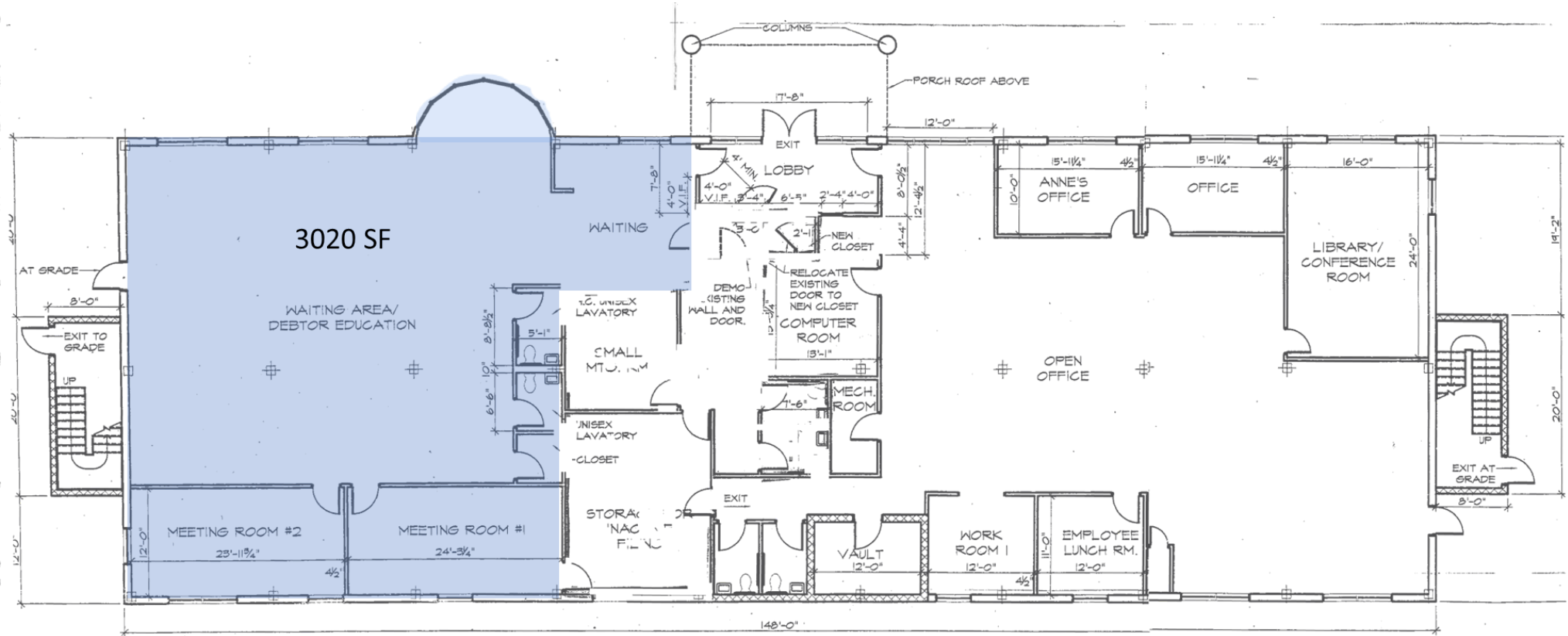
- 1st floor office or medical space
- Suite is plumbed
- Suite includes 2 private ADA restrooms
- Turn-key fit outs available
- Flexible floor plan options and opportunity to divide space to 1500 SF
- Zoning: I-2
- Comcast
- 9' ceilings
- Fully sprinklered
- Monument signage available



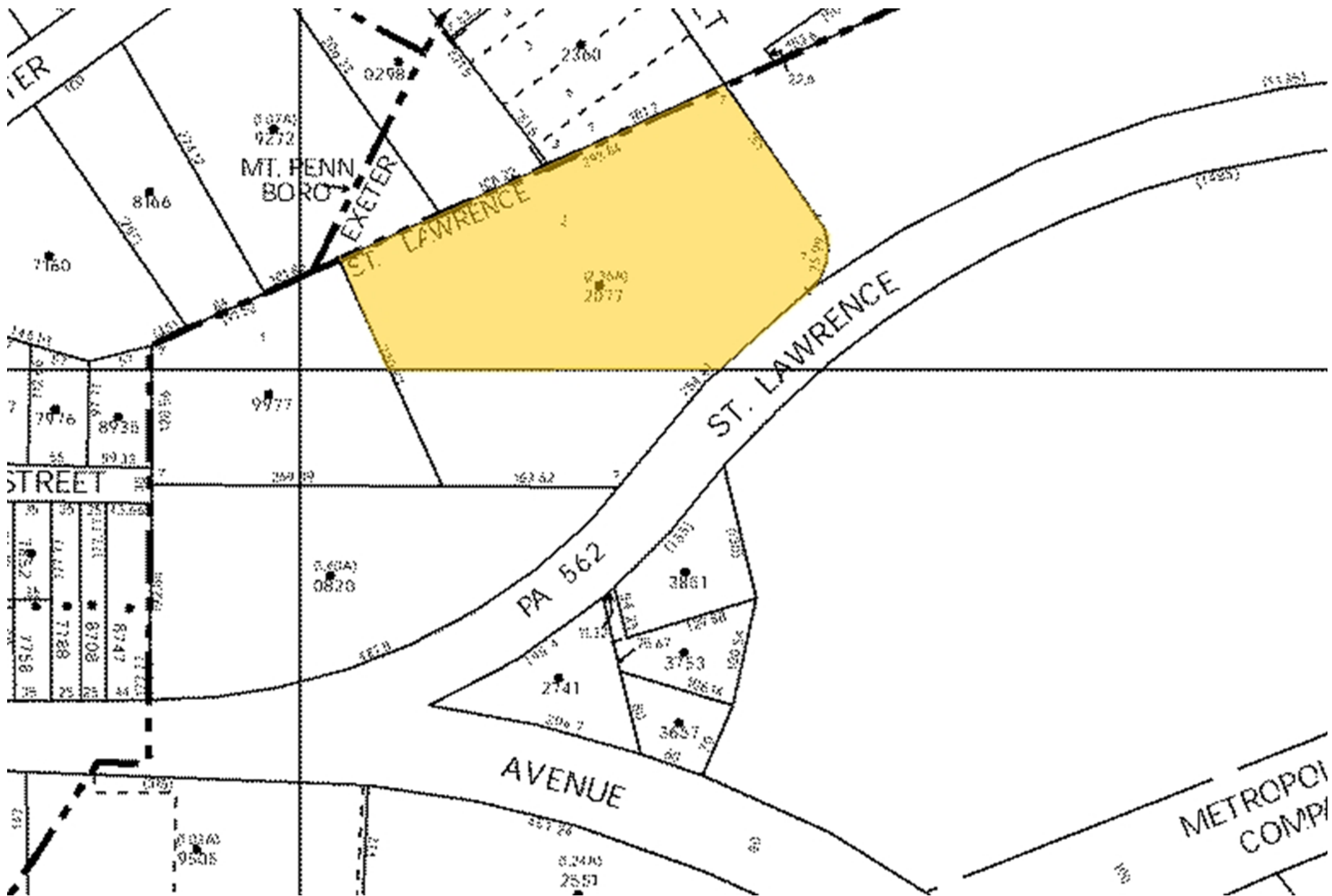
Lease Rate:
\$17.50 / SF plus utilities



FIRST FLOOR PLAN



PLAT MAP



LOCATION HIGHLIGHTS / SITE MAP



2901 St. Lawrence Ave.



2901 St. Lawrence Ave.

